

Softricity SoftGrid Client 4.0
Policy Template v1.00b

Provided by
Rodney Medina

<http://www.slider.demon.nl>



<http://www.loginconsultants.com>
<http://portal.loginconsultants.nl>

Version History:

[Augustus. 20 2006] – version 1.00b (only for SoftGrid 4.0)

From this point the Administrative Template will only support the SoftGrid 4.0 Client.

From this point there will be 1 Administrative Template instead of 2.

- Removed SFT Import Settings¹
- Renamed Experimental Settings to SoftGrid File System
- Moved SoftGrid Server Settings to main area
- Added Automatically Refresh at specific time intervals to SoftGrid Server Settings
- Modified the Connection Protocol Security setting to work with SoftGrid 4.0
- Modified the Disconnected Operation settings to work with SoftGrid 4.0
- Added possibility to limit the Disconnected Operation to a specific time. Up to 180 days.
- Removed Network Activity light. This feature is no longer available within the SoftGrid Client
- Removed the User Configuration Settings. The concerned settings have been moved from User registry to machine registry.
- Added the ability to completely hide the SoftGrid Client from the System Tray.
- Added the ability to configure the Remote SoftGrid Client Administration feature.

¹ This is because the registry key where the SFT Import Settings has been changed by Softricity from REG_SZ to REG_Multi_SZ. As you might know REG_Multi_SZ registry is not supported in Administrative Templates.

[march. 13 2005] – version 0.99 (only for SoftGrid 3.1)

From this point the Policy Template will only support the SoftGrid 3.1 Client.

From this point there will be 2 policy templates; one for the Windows Desktop Client and one for the Terminal Services Client.

- Added Advanced Network Settings.
- Added Application Usage Log Settings.
- Added SFT Import Settings.
- Added SoftGrid Dump Settings.
- Added New user permissions "Remove App Completely" and "Import Application".
- Increased the SoftGrid Cache size up to a maximum of 64GB (was 4GB).
- Moved SoftGrid Cache Size, Cache Location and Virtual File System settings to a subpolicy named "Experimental Settings". According to Softricity Support these 3 settings can cause some minor issues being set true a GPO.
- Added SoftGrid Server settings to the "Experimental Settings" subpolicy. This makes it possible to manage which SoftGrid Server will be used by your SoftGrid Clients. Read the last page of this doc to see how it works.

[Nov. 26 2003] – version 0.92 (only for SoftGrid 3.0)

Added Permissions Settings which make it possible to manage what permissions users have within the SoftGrid Client. Note: these settings do not apply to Administrators.

[Sep. 26 2003] - version 0.91 (only for SoftGrid 3.0)

First public release. From this point the Policy Template will only support the SoftGrid 3.0 Client.

[Apr. 6 2003] - version 0.90 (only for SoftGrid 2.05)

Almost all of the settings of the SoftGrid Client consists of Reg_SZ and Reg_Dword registry keys. So i figured "what the hell" lets make it all work better by creating a Policy Template for all the settings of the SoftGrid Client. This makes it possible to manage all these settings centrally from within Active Directory or an NT4 Domain.

Latest version tested with:

Windows 2003 Group Policies only (Not on NT4 Policies, should work).

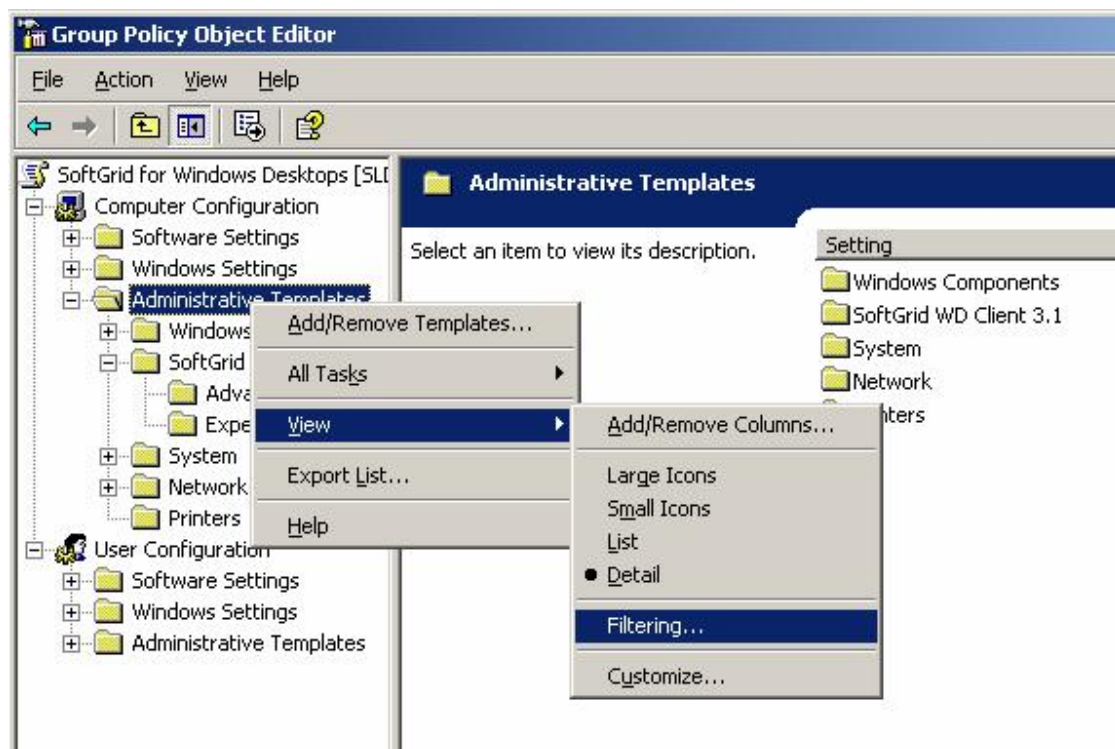
Windows XP Professional with SoftGrid Client 4.0.0.585

Windows 2003 Terminal Services with SoftGrid Client 4.0.0.585

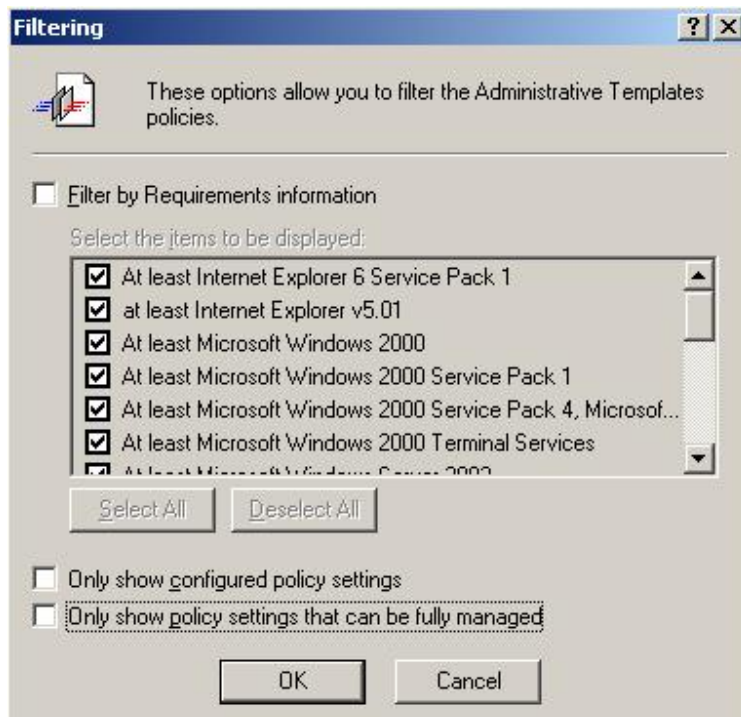
How To Use the Policy Template:

The process is the same as with a normal Policy Template. This Policy Template consists of two parts; a user and a machine policy. Since the registry keys that the SoftGrid client uses aren't Windows 2000/XP/2003 Compliant you have to change the filter settings view in the Group Policy to be able to configure the SoftGrid Client Settings.

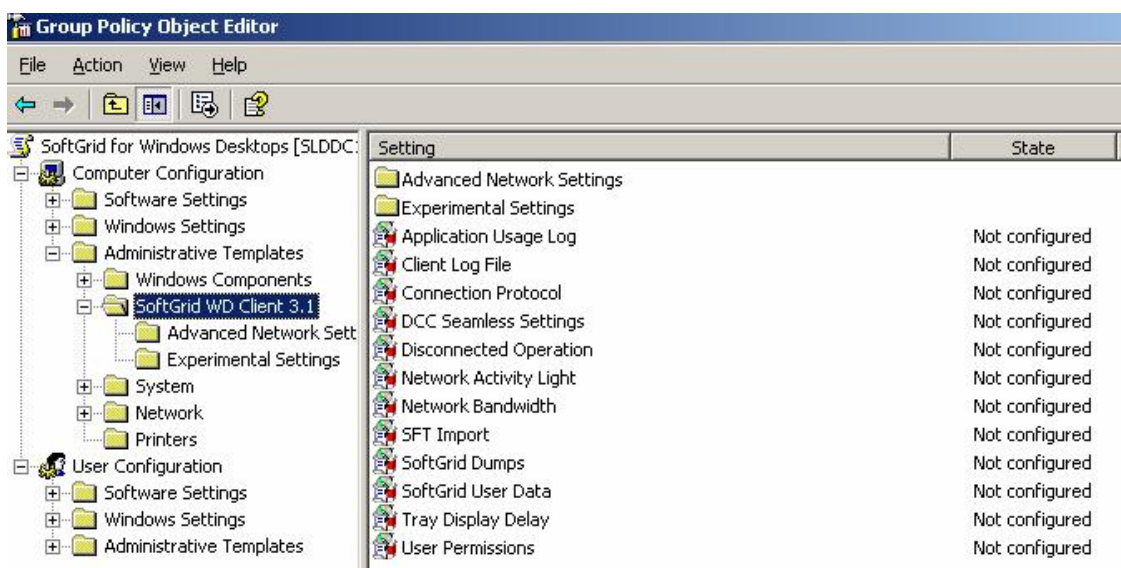
Change the view Step 1:



Change the view Step 2: (unmark the "only show policy settings that can be fully managed" and click ok.

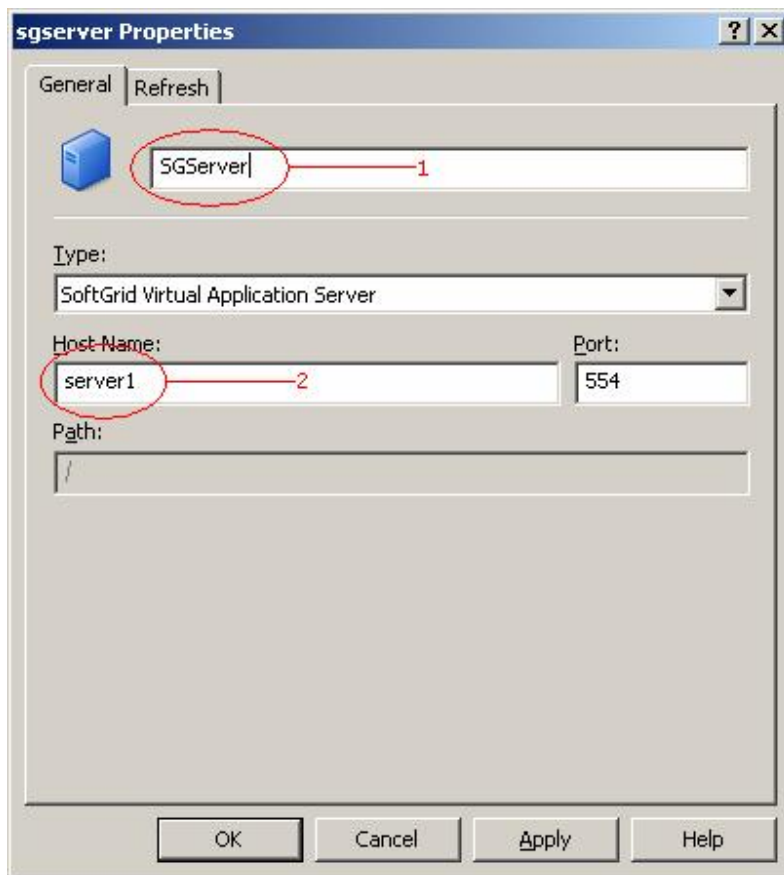


The result should be something like this:



How To Use the set Hostname Feature:

The SoftGrid Client has 2 fields to enter the hostname like shown below:



1. Is the name as the SoftGrid Client knows it and is actually the name the SFTMime commands needs. Using this policy template to manage SoftGrid Hostnames this name is static and always named "SGServer" like shown above. But this doesn't really matter because.....

2 Is the actual hostname (Netbios or FQDN) or IP Address of the SoftGrid Server. This part offcourse is dynamic and can be managed through this policy template.

Note: If you are using the %sft_softgridserver% variable as suggested by Softricity on your SoftGrid Clients, set it to translate to the actual hostname (2 in example above) not the static name SGServer.